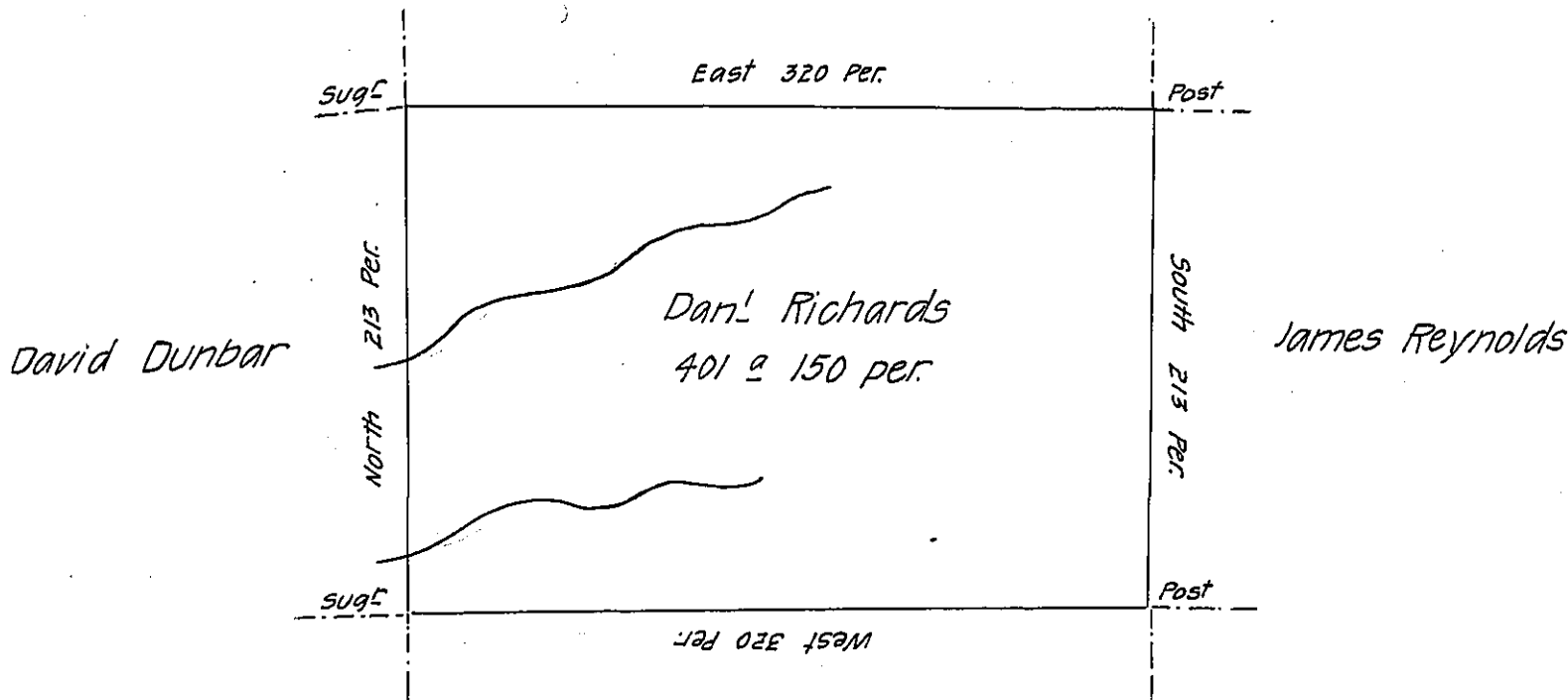


John Riley



Saml Pleasants

Situate on the west side of French Creek in Allegheny County
 Containing 401 acres 150 perches & allowance of six per cent for roads
 &c surveyed the 16th day of May 1795 in pursuance of a warrant
 dated the 30th day of May 1792.

Wm Power DY SR

To Danl Brodhead Esqr
 Surveyor General

IN TESTIMONY that the above is a copy of the original remaining on file in
 the Department of Internal Affairs of Pennsylvania, made
 conformably to an Act of Assembly approved the 16th day of
 February, 1833, I have hereunto set my Hand and caused
 the Seal of said Department to be affixed at Harrisburg,
 this eighteenth day of March 1907.

[Signature]
 Secretary of Internal Affairs.